



**£1,250 Per Calendar Month**

**Flat 1 149a Croydon Road**

Beckenham, BR3 3QH

- FIRST FLOOR APARTMENT
- ONE DOUBLE BEDROOM
- REDECORATED THROUGHOUT
- NEW CARPET LAID
- GAS CENTRAL HEATING, ACOUSTIC WINDOWS
- EXCELLENT LOCAL AMENITIES
- COUNCIL TAX BAND B
- EPC BAND D (61)
- OFFERED UNFURNISHED
- AVAILABLE IMMEDIATELY



## Homezone Property Services - Beckenham

149 Croydon Road, Beckenham, Kent, BR3 3QH  
tel. 020 8464 9962 mail. [beckenham@homezone.co.uk](mailto:beckenham@homezone.co.uk)  
web. [www.homezone.co.uk](http://www.homezone.co.uk)







We are delighted to offer for let this excellent one bedroom first floor apartment located close to popular amenities in Elmers End, Beckenham within walking distance to Elmers End station.

Located above a commercial premises the property comprises spacious and bright living/dining room, modern fitted kitchen suite, one double bedroom & a modern white bathroom suite. The property is tastefully presented throughout and has been redecorated prior to occupation with new carpet laid to the bedroom. Further benefits include Gas Central Heating, and 'Acoustic' windows.

Local amenities include grocery shops, restaurants and bars, and there are good green spaces close by. Access to Beckenham town centre is straight forward, and either a 15 minute walk or a short bus ride.

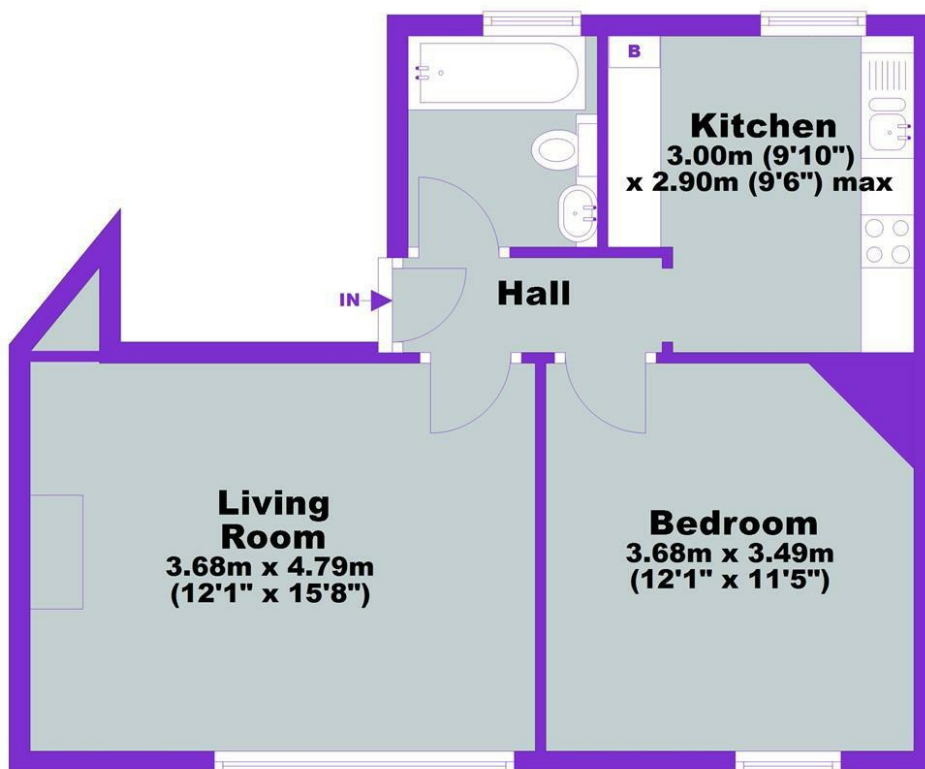
Offered unfurnished and available immediately. SINGLE PERSON OR PROFESSIONAL COUPLE ONLY. NO SMOKERS. NO PETS.

Connected Party Disclosure: All interested parties are advised that this property is owned by the partner of an employee from Homezone Property Services, Beckenham.



## First Floor

Approx. 46.0 sq. metres (494.9 sq. feet)



**Total area: approx. 46.0 sq. metres (494.9 sq. feet)**

This plan is for general layout guidance and may not be to scale.

Plan produced using PlanUp.

**COUNCIL TAX**

London Borough of Bromley.  
Band: B (£1,432.81 2023/24)

**UTILITIES**

Electricity: Mains connected, current supplier is EDF.  
Gas: Mains connected, current supplier is EDF.  
Water: Mains connected, supplier Thames Water.  
Estimated Broadband Speeds: TBC  
Mobile Coverage: TBC  
Satellite/Fibre/TV Availability: BT/Sky/Virgin.

**PROPERTY MISDESCRIPTIONS ACT 1991**

The Agents has not tested any apparatus, equipment, fixtures and fittings, or services, so cannot verify that they are in working order or fit for the purpose. The buyer is advised to obtain verification from his or her Professional Buyer. References to the Tenure of the property are based on information supplied by the Vendor. The agents have not had sight of the title documents. The buyer is advised to obtain verification from their Solicitor. You are advised to check the availability of any property before travelling any distance to view.